

Telio[®] CAD Crown and Bridge by NobelProcera[™]

FACT SHEET VERSION 1

Overview

- Temporary acrylic crowns and bridges up to 6 units
- Homogenous material
- Six shades for optimal esthetics
- Lifelike fluorescence
- Excellent polishing characteristics for smooth surface
- NobelProcera Precision Milled Restorations with excellent fit and extraordinary strength



Material characteristics

Material type:	Polymethyl methacrylate (PMMA) 99.5%, Pigments < 0.5%
Flexural strength:	130 ± 10 MPa
Modulus of elasticity:	3200 ± 300 MPa
Ball indentation:	180 ± 5 MPa
Vickers hardness (HV 0.5/30):	190 ± 5 MPa
Water absorption:	< 28 µg/mm ³
Water solubility:	< 0.6 µg/mm ³

Veneering

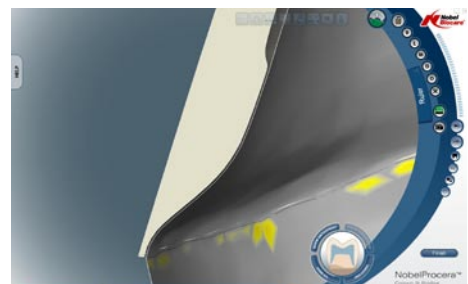
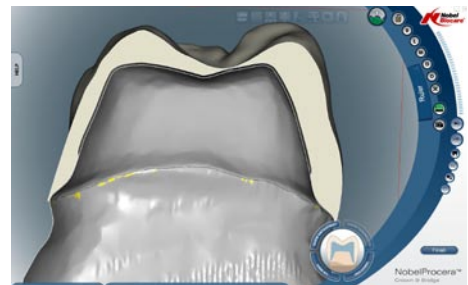
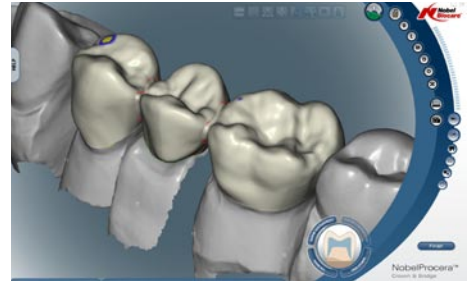
- Telio[®] Lab (PMMA-based two-component powder/liquid system)
- Telio[®] Lab LC Veneer (ready to use, light-curing pastes)
- Grinding and/or air abrasion (Al₂O₃, 100 µm, 1–2 bar/14.5–29 psi) and the application of Telio[®] Lab Cold Liquid is mandatory. With Telio[®] Lab LC Veneer additional conditioning with SR Compositiv is required.

Additional veneering material recommendations and supporting guidelines are available from Ivoclar Vivadent on www.ivoclarvivadent.com.



Indications

- Temporary anterior or posterior full contour crown or bridge up to 6 units for functional and esthetic replacement of teeth
- Tooth- and implant-supported (abutment level)
- Minimum thickness: occlusal 1.5 mm, circular 0.8 mm
- Connector size:
 - Anterior bridge (one or two pontics): 12 mm²
 - Posterior bridge with one pontic: 12 mm²
 - Posterior bridge with two pontics: 16 mm²



Contraindications

- Parafunctional tendencies, for example bruxism and/or clenching
- Use as permanent restoration (> 12 months)
- Use in patients who are allergic to methyl methacrylate
- Bridges with more than two pontics

NobelProcera – certified quality

NobelProcera provides certificates of material authenticity.

Additional information

- Therapeutic restorations when correcting temporomandibular disorders and malocclusion
- The framework design is supported by Ivoclar Vivadent tooth library with a real-time warning function in the NobelProcera Software

Disclaimer: Telio® CAD products are currently under FDA review. Some products may not be regulatory cleared/released for sale in all markets. Please contact the local Nobel Biocare sales office for current product assortment and availability.